



AN ISO 9001 : 2008 (WITH DESIGN)

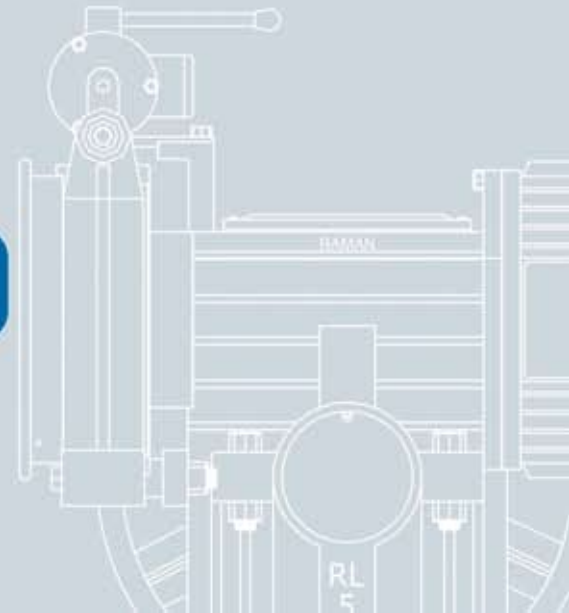
RAMAN[®]

Elevator Traction Machines



COMPACT

RL-4,5,6.



Elevator Traction Machines

RAMAN[®]



STANDARD MACHINE
RL-7,8,9.

Company Profile

Raman Engineering Co is a well established company since 1999 in the field of manufacturing 'Elevator Traction Machines'. These exclusive conceptually designed machines for passengers elevators ensure smooth and silent operations.



TABLETYPE STAND

The company is well equipped with the latest state-of-the-art C.N.C. Machines with accurate & precise digital measuring instruments. Our company has strong capabilities in designing, developing & manufacturing elevator traction machines of high reliability & trouble free performance assured for quality, safety & comfort for Elevators. These ELEVATOR TRACTION MACHINES are available in the range of 150 kg to 3500 kg and relative speed from 0.2 m/s to 1.5 m/s.

The company strictly adheres to BIS Standard Norms. Company's in-house R & D division immediately incorporates the modern-day innovations in design and production before they are apparent in the market.

The most valuable asset of the company is the mutual faith, trust and the ultimate satisfaction of the loyal customers since the inception of the company. They have helped company to emerge as one of the market leaders.

Safety Devices



OVERSPEED GOVERNOR

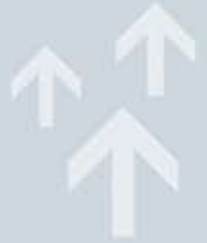
DIVERTER SHEAVE

RETIRING CAM

Technical Information

- Motor Voltage 415, 3 Phase, 50 HZ
- Insulation Class 'F'
- Recommended Hydraulic Oil :

Indian Oil : Servo System	320	Hindustan Petroliums :	Enklo	320
B.P.C.L. : Hydrol	320	Castrol	: Alpha SP	320
Vidol : Avalon	320	IPOL	: Hydropac AW	320
- Oil should be changed after 3 months from the date of installation. Then after Oil should be changed every year. One should use only our recommended above Oil.
- Recommended Grease Hindustan Petroleum - AP 3.
- In case bad condition of Oil found, it must be changed immediately.



RL-4

Sr. No.	Machine	Static Load (kg.)	Gearbox		No. of Pass.	Load (kg.)	Speed (m/s)	Roping	Sheave (mm)			Motor		
			Centre (mm)	Ratio					Dia	Rope Nos.	Rope Dia	KW	HP	Pole
1	RL-4	1800	101.6	32/1	2 to 4	272	0.46	1:1	305	3	10	2.2	3.0	6
2	RL-4	1800	101.6	32/1	2 to 4	272	0.61	1:1	406	3	10	2.2	3.0	6

RL-5

3	RL-5	3000	127.0	40/1	5 to 6	408	0.65	1:1	533	3	13	3.7	5.0	6
4	RL-5	3000	127.0	40/1	12	800	0.32	2:1	533	3	13	3.7	5.0	6
5	RL-5	3000	127.0	40/1	5 to 6	408	1.00	1:1	533	3	13	5.5	7.5	4
6	RL-5	3000	127.0	40/1	11	750	0.50	2:1	533	3	13	5.5	7.5	4

RL-6

7	RL-6	4500	152.4	40/1	7 to 10	680	0.65	1:1	533	3	13	5.5	7.5	6
8	RL-6	4500	152.4	40/1	18	1200	0.32	2:1	533	4	13	5.5	7.5	6
9	RL-6	4500	152.4	40/1	7 to 10	680	1.00	1:1	533	3	13	7.5	10.0	4
10	RL-6	4500	152.4	40/1	15	1000	0.50	2:1	533	4	13	7.5	10.0	4

RL-7

11	RL-7	6500	177.8	50/1	11 to 15	1020	0.60	1:1	610	4	13	7.5	10.0	6
12	RL-7	6500	177.8	50/1	16 to 20	1360	0.60	1:1	610	4	13	9.3	12.5	6
13	RL-7	6500	177.8	50/1	30	2000	0.30	2:1	610	4	13	7.5	10.0	6
14	RL-7	6500	177.8	60/2	11 to 13	884	1.00	1:1	610	4	13	9.3	12.5	6
15	RL-7	6500	177.8	60/2	22	1500	0.50	2:1	610	4	13	9.3	12.5	6
16	RL-7	6500	177.8	60/2	13 to 15	1020	1.00	1:1	610	4	13	11.0	15.0	6
17	RL-7	6500	177.8	60/2	25	1700	0.50	2:1	610	4	13	11.0	15.0	6
18	RL-7	6500	177.8	60/2	7 to 10	680	1.50	1:1	610	4	13	11.0	15.0	4
19	RL-7	6500	177.8	60/2	11 to 13	884	1.50	1:1	610	4	13	15.0	20.0	4

RL-8

20	RL-8	7500	203.2	50/1	21 to 22	1500	0.60	1:1	610	4	13	11.0	15.0	6
21	RL-8	7500	203.2	50/1	40	2700	0.30	2:1	610	4	13	11.0	15.0	6
22	RL-8	7500	203.2	60/2	16 to 20	1360	1.00	1:1	610	4	13	15.0	20.0	6
23	RL-8	7500	203.2	60/2	32	2200	0.50	2:1	610	4	13	15.0	20.0	6
24	RL-8	7500	203.2	60/2	14 to 16	1088	1.50	1:1	610	4	13	18.7	25.0	4

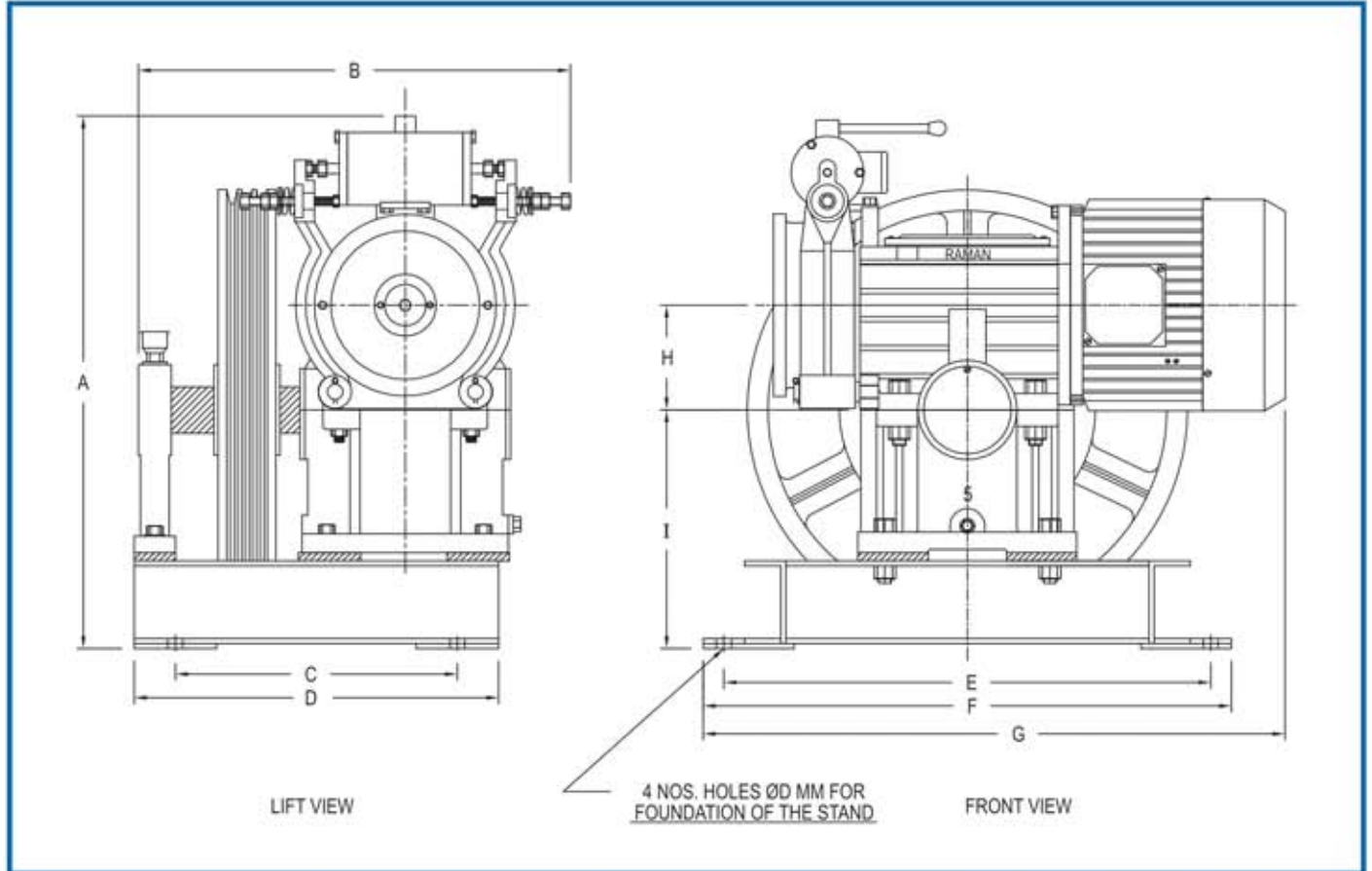
RL-9

25	RL-9	8300	228.6	48/1	23 to 30	2000	0.60	1:1	610	4	13	15.0	20.0	6
26	RL-9	8300	228.6	48/1	50	3500	0.30	2:1	610	5	13	15.0	20.0	6
27	RL-9	8300	228.6	60/2	19 to 22	1496	1.00	1:1	610	4	13	18.7	25.0	6
28	RL-9	8300	228.6	60/2	37	2500	0.50	2:1	610	5	13	18.7	25.0	6

Please note the following points carefully.

- Passenger weight is 68 Kg. per person as per Indian Standard
- The parameter in this table bases on the counterweight coefficient 0.50
- Car Weight is about 1.2 time of rated load.
- Table is just for reference to select our machine, you must calculate as per your elevator parameter.
- As innovation in design is continuous, the technical data can be changed without prior notice.

Technical Drawing :



	A	B	C	D	E	F	G	H	I	ØD
RL-4	530	460	315	355	470	510	630	101.6	216	14.2
RL-5	645	540	340	440	590	640	750	127	290	17.5
RL-6	670	550	365	465	590	640	805	152.4	290	17.5

NOTE - AS INNOVATION IN DESIGN IS CONTINUOUS, THE TECHNICAL DATA CAN BE CHANGED WITHOUT PRIOR NOTICE.
ALL DIMENSIONS ARE IN MM.